



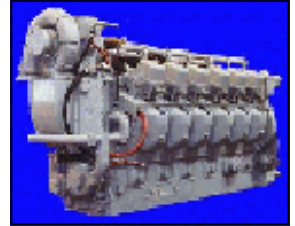
Met-Clean

Heavy Duty, Non-Caustic Cleaner

Rapidly Cleans & Brightens Components inc. Engines, Gearboxes, Cylinder Heads, Racks, Equipment and all other Metal Parts.

Cleans, Degreases, Brightens - in one Easy Action

Formulated for use for all industrial spray wash machines and wash tanks applications. **Met-Clean** removes even the heaviest build-up of compacted grease, soiling, light rust and even soft carbon.



Safe & Non-Corrosive to Components

Met-Clean is safe on rubber, polypropylene, plastics, glass, ferrous and non-ferrous metals, copper, brass, aluminium, zinc and their alloys.



Energy Saving - Cost Efficient.

Heat water to 50-70°C. **Met-Clean** works at lower temperatures than other products, saving energy, time and money. **Met-Clean's** high dilutions, excellent emulsifying, soil dispersing, degreasing and easy rinsing qualities give superb cleaning results together with extended bath life.

The solution life is normally between 6-12 weeks depending upon the degree of contamination present.

Low Foam - Easy to dissolve

Dilutes instantly in water and does not require pre-diluting.

Dispose of Straight to Drain

Met-Clean is biodegradable and is safe to go straight to drain.

However care should be taken to ensure that the contaminants removed during the cleaning process do not contain components that are not acceptable by water authorities i.e. heavy metals, swarf or heavy oils.

Ensure pH of disposed product is within your local authority consent level.



Spray Wash Machine — Dilution rate 1:100 to 1:50

Heat tank water to between 50-70°C.

Add 0.5% - 2.0% of **Met-Clean** to tank water depending upon degree of contamination.

No need to pre-dilute as **Met-Clean** powder dilutes instantly.

Wash components according to your process and machine manufacturers instructions. See product label for full instructions.

Engineering & Engine Reconditioning/03/2008



Hydra International Limited

Cerberian House, Carters Lane,
Kiln Farm, Milton Keynes MK11 3ER, U.K.
Tel: 01908-265889 Fax: 01908-262097

Email: sales@hydra-int.com Web Site: www.hydra-int.com



Material Safety Data Sheet

All the information on this sheet relates to the concentrated product only, in use dilution will decrease any possible hazard significantly.

Manufacturer

Hydra International Ltd

Cerberian House, Carters Lane, Kiln Farm, Milton Keynes MK11 3ER UK

Tel: 01908-265889 Fax: 01908-262097

E-mail: sales@hydra-int.com Web Site: www.hydra-int.com



1. IDENTIFICATION	Met-Clean	
2. HAZARDS IDENTIFICATION	Corrosive and harmful	
3. COMPOSITION	A powder blend of Sodium Metasilicate, phosphates and non-ionic surfactants	
4. FIRST AID MEASURES	EYES SKIN INHALATION INGESTION	Flush with copious amounts of water and seek medical advice Wash with soap and water Not applicable In the unlikely event of ingestion seek medical aid immediately Give nothing by mouth to an unconscious person
5. FIRE HAZARD & FIRE FIGHTING PROCEDURES	Non flammable	
6. ACCIDENTAL RELEASE MEASURES	SMALL SPILLS LARGE SPILLS	Wash away with water Cover with sand and earth. Pickup and hold for waste disposal
7. HANDLING AND STORAGE	Closed containers above 5°C	
8. EXPOSURE CONTROLS AND PERSONAL PROTECTION	RESPIRATORY PROTECTION VENTILATION PROTECTIVE GLOVES EYE PROTECTION OCCUPATIONAL EXPOSURE LIMIT	Not applicable Not applicable Wear PVC or Rubber Gloves Wear goggles Not applicable
9. PHYSICAL AND CHEMICAL PROPERTIES	PHYSICAL STATE COLOUR ODOUR FLASHPOINT SOLUBILITY SPECIFIC GRAVITY	Powder Straw Alkaline Non Flammable Water Soluble Powder
10. STABILITY & REACTIVITY DATA	CHEMICAL REACTIVITY STORAGE STABILITY INCOMPATIBILITY HAZARDOUS DECOMPOSITION AND COMBUSTION PRODUCTS	Reacts as an Alkali Stable Acids and Acidic Material None
11. TOXICOLOGICAL INFORMATION	EYES SKIN INHALATION INGESTION	Corrosive Corrosive Not applicable Harmful/Corrosive
12. ECOLOGICAL INFORMATION	Not classified as dangerous to the environment	
13. DISPOSAL CONSIDERATION	As per current rules of local authority	
14. TRANSPORTATION INFORMATION	Contains Sodium Metasilicate. Corrosive. Packing Group II. UN 1759	
15. REGULATORY INFORMATION	LABELLING INFORMATION	Contains 39% Sodium Metasilicate
RISK PHRASES	R20/22 R34	Harmful by inhalation and if swallowed Causes burns
SAFETY PHRASES	S24/25 S26 S27/28 S36/37/39 S45	Avoid contact with skin and eyes In case of contact with eyes, rinse immediately with plenty of water and seek medical advice After contact with skin, take off immediately all contaminated clothing, and wash immediately with plenty of Wear suitable protective clothing, gloves and eye/face protection In case of accident or if you feel unwell, seek medical advice immediately (show the label where possible)
HAZARD SYMBOL	Corrosive and Harmful	
16. OTHER INFORMATION	5th January 2008	

The information contained in this document is provided in accordance with the requirements of Chemicals (Hazard Information & Packing) Regulations. The product should not be used for any purpose other than as stated on the label without obtaining specific written instructions directly from the supplier's Head Office. As specific conditions of use are outside the supplier's control the user is responsible for ensuring the requirements of relevant legislation are complied with. The user assumes all liability for damage or injury caused from abnormal use, failure to follow recommended practices & any hazard inherent in the nature of the product.