



Hydra Re-Gen

3 in 1

Stops Slow Running - Eliminates Odours - Boosts Bacteria

**Controlled Release of Oxygen & Grease Reducing Enzymes
Recovers Failed Septic Tanks, Leach-Field's and Cesspools
Adds More Waste Processing Capacity to Your System**



Signs of a Failed Septic Tank Soak-Away

- Septic tank effluent surfacing on your land (see photo).
- Strong or bad odours coming from the septic tank or drains.
- Pollution of nearby ditches or streams with septic tank effluent.
- Slow flushing of toilets and gurgling in the drains.
- Ground movement (dips) near the septic tank or soak-away drain-field.
- Toilet overflowing.
- Overflow at washing machine hook-up.
- Overflows into shower or bath when the sink is discharged.
- Drain inspection chambers have standing effluent in them. These should be emptied.

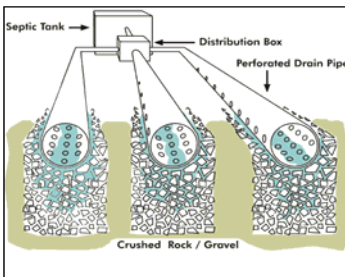


The Problem

The predominate bacteria in all human and animal waste is facultative bacteria these are organisms which switch between aerobic and anaerobic bacteria depending on the available oxygen conditions.

Anaerobic is the bacterial condition and action which occurs when there is not a plentiful supply of air or oxygen i.e. a typical septic tank. **Septic = Anaerobic Bacteria.**

In this anaerobic condition the bacteria produce foul smelling and dangerous hydrogen sulphide gas (H_2S) and sulphides. H_2S in concentrations over 10ppm are poisonous to humans and animals. These bacteria are also many times less efficient at processing waste than bacteria in aerobic conditions, leading to excessive sludge build-up.



This same anaerobic bacteria secrete a bio slime which over time clogs the porous pipework and surrounding soil making it impossible for liquid to soak away. The rate of bio mat development and the degree of bio mat thickness is in direct proportion to overall microbial populations and their degradation function and capabilities.

These combined factors greatly impact bio film growth and field flow loss. With this understanding, solving the problems biologically is not as difficult as once believed.



Hydra International Limited

Cerberian House, Carters Lane,
Kiln Farm, Milton Keynes MK11 3ER, U.K.
Tel: 01908-265889 Fax: 01908-262097

Email: sales@hydra-in.com Web Site: www.hydra-int.com



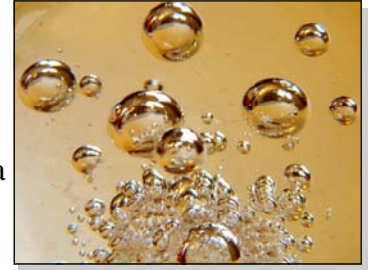
The Answer

Hydra Re-Gen switches the facultative bacteria to an aerobic state thereby greatly increasing their efficiency and the bacteria therefore no longer produce sulphides and hydrogen sulphide gas. In the aerobic condition these bacteria produce odourless carbon dioxide (CO₂).

How Does it Do This

Hydra Re-Gen contains vast quantities of fast and slow release oxygen agents and enzymes these have a unique natural reaction which rapidly boosts the natural bacteria in your system.

This unique combination allows the facultative bacteria which is present in all human waste to switch from anaerobic to **super efficient** aerobic bacteria which is up to twenty times more efficient in breaking down sewage.



Rapid Action

Acting rapidly this fortified bacteria breaks down organic matter and clogging sulphides without killing the helpful bacteria in your septic system.



Preventative Maintenance

Hydra Re-Gen can not only be used to restore flow to a slowed system, but can also be used effectively to help prevent the build up of sulphides which cause the water absorption to be severely slowed and also builds up in the aggregate surrounding the drain pipes.

N.B. Preventative maintenance will help the system before major problems develop.

Features & Advantages of Hydra Re-Gen

- ✓ Aerobic bacteria do not produce bio-mat and will clean up anaerobic produced bio mat that clogs pipes and disposal fields.
- ✓ Aids the growth of the soils natural bacteria.
- ✓ Digests fats and other floating material that clog pipes and the disposal field.
- ✓ Reduces soil compaction creating passages for water to flow.
- ✓ Uses natural, safe bacteria to digest and consume grease and FOG's.
- ✓ Contains natural growth enhancers and bio-stimulants to maximize bacterial action.
- ✓ Significantly reduces malodours (Hydrogen Sulphide) and FOG's (fats, oil and grease) deposits.
- ✓ Suitable for all septic tank sizes.
- ✓ Reduces effluent COD / BOD levels by up to 80%.
- ✓ Reduces complaints from public.
- ✓ Easy to use and cost effective, no measuring or waste.
- ✓ Reduces or eliminates malodours, including Hydrogen Sulphide.
- ✓ Increases pump out intervals by reducing sludge formation.



Microbiological Information

Multiple strains of selected Facultative anaerobes (growth with or without oxygen).

All microorganisms are Class 1 ATCC organisms, Non-pathogenic, Spore Forming and Vegetative cells. Certified Salmonella Free.

Produces abundant amylase, protease, lipase, cellulose, dioxygenase, and pentosanase primary enzymatic activity.

Contains natural nutrients for bio stimulation and growth enhancement.



Many Different Applications

- Animal farm waste odours, cows, pigs and birds
- Compost
- Commercial kitchen grease interceptor odours
- Industrial - high BOD waste
- Sewage systems, waste water lift or pump stations
- Sludge reduction in waste water processing
- Waste handling and recycling
- Industrial waste water ponds

Instructions

Blue measuring scoop supplied. 1 heaped scoop = 40g.

After adding **Hydra Re-Gen** to toilet - flush toilet, if adding to sinks, showers and baths run 1 gallon (5 litres) of water to wash **Hydra Re-Gen** past water traps to septic system or cesspool.

500 gallon (2,275 litre) System

Existing Systems

Flush 1 heaped scoop per month down toilet.

Seeding New Systems

1st four weeks - Flush 1 heaped scoop per week down toilet.

Then monthly - Flush 1 heaped scoop per month down toilet.

1000 - 1200 gallon (4,500 - 9,000 litre) System

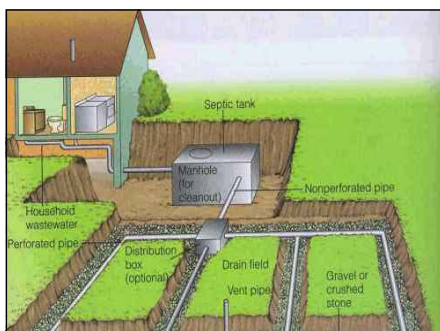
Existing Systems

Flush 2 heaped scoops per month down toilet.

Seeding New Systems

1st 4 weeks - Flush 2 heaped scoops per week down toilet.

Then monthly - Flush 2 heaped scoop per month down toilet.



Slow Running (Blocked Drain-field)

Add direct to leach field via the distribution box.

Remove standing water from drain box.

Add 500g **Hydra Re-Gen** to 5 gallons (20 litres) of water and add via distribution box after septic tank. Repeat weekly until clear.



Pack Sizes

1 kilo and 5 kilo.

Material Safety Data Sheet

All the information on this sheet relates to the concentrated product only, in use dilution will decrease any possible hazard significantly.

Manufacturer

Hydra International Ltd

Milton Keynes MK11 3ER UK

Tel: 01908-265889 Fax: 01908-262097

E-mail: sales@hydra-int.com Web Site: www.grease-eater.co.uk



1. IDENTIFICATION	Hydra Re-Gen	
2. COMPOSITION	A powder blend of bacteria amylase, protease, lipase, cellulose, dioxygenase, pentonase enzymes, sodium carbonate, hydrogen peroxide, calcium peroxide and calcium hydroxide.	
3. HAZARDS IDENTIFICATION	Persons with known respiratory disorders (eg asthma) should avoid inhalation of the powder. The product contains enzymes so there is a risk of sensitisation reactions in certain susceptible individuals	
4. FIRST AID MEASURES	EYES SKIN INHALATION INGESTION	Flush with copious amounts of water Wash with soap and water In the event of excessive inhalation, remove to fresh air and obtain medical advice. Non-toxic, but if in doubt seek medical advice In the unlikely event of ingestion seek medical aid immediately Give nothing by mouth to an unconscious person <u>In all cases, if symptoms persist, seek immediate medical advice</u>
5. FIRE HAZARD & FIRE FIGHTING PROCEDURES	Any extinguishing media may be used but should be appropriate to the cause of the fire. Low degree of risk due to thermal decomposition	
6. ACCIDENTAL RELEASE MEASURES	In the event of accidental spillage, sweep up and wash away remainder with plenty of water	
7. HANDLING AND STORAGE	Store product in a cold dry place. Prolonged storage in fridge or deep freeze. Protect from light, raised temperature and humidity.	
8. EXPOSURE CONTROLS AND PERSONAL PROTECTION	RESPIRATORY PROTECTION VENTILATION PROTECTIVE GLOVES EYE PROTECTION OCCUPATIONAL EXPOSURE LIMIT	Wear respiratory protection to avoid breathing in dust Not applicable Wear PVC or Rubber Gloves as appropriate Wear goggles if task or application method could result in eye contact from accidental splash or spray Not applicable
9. PHYSICAL AND CHEMICAL PROPERTIES	PHYSICAL STATE COLOUR ODOUR FLASHPOINT SOLUBILITY SOLUBILITY IN WATER pH VALUE	Granular Powder Pale Tan Slight Non Flammable Water Soluble 100 gm/100 ml (at 25°C) 8.5-9.5 (1 gm/1000 ml at 20°C)
10. STABILITY & REACTIVITY DATA	CHEMICAL REACTIVITY STORAGE STABILITY HAZARDOUS DECOMPOSITION AND COMBUSTION PRODUCTS	Not applicable The stability of the bacteria is dependent upon the storage conditions, see Sec.7. All other constituents are stable under normal storage conditions. Not applicable
11. TOXICOLOGICAL INFORMATION	EYES SKIN INHALATION INGESTION No toxic effect on the rat (2000 mg/kg) Limit test for acute oral toxicity (Annex V, EEC Commission Directive)	Irritant Irritant May cause irritation to mouth, throat and digestive tract May cause irritation to mouth, throat and digestive tract
12. ECOLOGICAL INFORMATION	Naturally occurring saprophytic, non hazardous bacteria on readily biodegradable base with oxygen release agents	
13. DISPOSAL CONSIDERATION	Flush away with water	
14. TRANSPORTATION INFORMATION	Not dangerous for transport	
15. REGULATORY INFORMATION	LABELLING INFORMATION	
	RISK PHRASES	None
	SAFETY PHRASES	None
	HAZARD SYMBOL	None
16. OTHER INFORMATION	1st Sept 2010	

The information contained in this document is provided in accordance with the requirements of Chemicals (Hazard Information & Packing) Regulations. The product should not be used for any purpose other than as stated on the label without obtaining specific written instructions directly from the supplier's Head Office. As specific conditions of use are outside the supplier's control the user is responsible for ensuring the requirements of relevant legislation are complied with. The user assumes all liability for damage or injury caused from abnormal use, failure to follow recommended practices & any hazard inherent in the nature of the product.